



Meet Ventures and Expand Your Horizon

Add Venture Forum

Calling for participants

It's Venture
where you can work
passionately



Do you ever find yourself thinking, "My research should benefit society, but how can I actually connect it to the real world?" If so, you're not alone. University-based, research and development-oriented venture companies are the perfect place for you to unleash your passion and research skills, aiming to bring innovative services and products to society. However, students often struggle to find the right place to truly showcase their abilities due to limited opportunities to learn about the goals, research focus, and societal approach of these venture companies. On the other hand, ventures also face challenges in finding like-minded individuals, unaware of the secretly burning passion and ideas that students possess. That's where the Add Venture Forum comes in, creating a platform for authentic communication between research and development-oriented ventures and enthusiastic students. Join us and discover the exciting possibilities that await you!

VOICES

- Interacting with various companies and people has inspired me to take more proactive and challenging actions in my research.
- This was the most interactive venture event I've ever attended.
- The event has broadened my horizons, introducing me to the option of working in a venture company.
- Exposure to numerous business models has given me insights into developing a strong research background.
- I believe that if I can engage in research that I'm passionate about and turn it into a career, it will lead to the life I've been seeking.

INFO

*The program is conducted in Japanese but we welcome internationals and those who is willing to communicate

Participants: Grad. Students, Post Doc. etc...

Participation Fee: Free

Companies:

<Osaka: 9 companies> Hutzper, YAMADA SHOKAI, Agri-Light Lab, Leave a Nest etc...

<Tokyo: 12 companies> Cell Fiber, ugo, YAMADA SHOKAI, Liberaware, Mobile Internet Capital, SankeiEngineering, fabula, Leave a Nest Capital, Leave a Nest, etc

in Osaka

Date: 2024. Nov. 2 (Sat)

Time: 13:00-17:30

Venue: Osaka Science and Technology Center (Nishi-ku, Osaka City)

in Tokyo

Date: 2024. Nov. 10(Sun)

Time: 13:00-17:30

Venue: Center of Garage (Sumida-ku, Tokyo)

Details: <https://hd.lne.st/forum/>



CONTACT

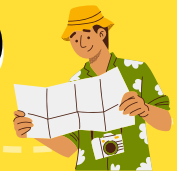
Izumi Dateyama PhD. Leave a Nest Co., Ltd

✉ HD@LNEST.JP



Add Venture Forum

Highlights



若手研究者 x 研究開発型ベンチャーのリアルトーク！

ベンチャーに
飛び込むことで
広がった私の研究



SPOT 1

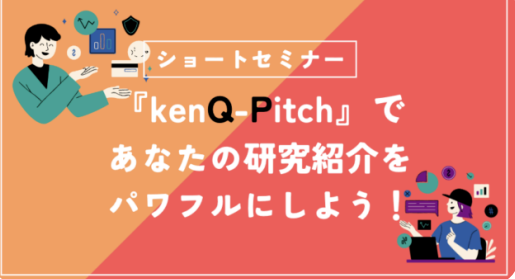
Career Session

To help students gain a realistic understanding of working with venture companies, young researchers who have had valuable experiences participating in venture companies will share their genuine stories and insights.

SPOT 2

Short Seminar

How do you introduce yourself when meeting new people? In situations where you're trying to advance your career, such as "accelerating your research" or "expanding your career prospects," we will introduce techniques for creating a compelling 1-minute self-introduction that can help you gather the essential connections you need.



SPOT 3

Add Venture 1min Pitch

Each participating venture company will deliver a passionate 1-minute presentation about their vision and the topics they wish to discuss with participants. This session will allow you to get an immediate sense of the participating venture companies, helping you decide which booths to visit.



SPOT 4

Booth Session

Researchers and managers from each venture company will engage in discussions with participants to explore potential collaborations that combine their passion and knowledge. They will also discuss what kind of partners they could become for each other. Don't hesitate to bring your passion to the table and dive into these engaging conversations!



Details: <https://hd.lne.st/forum/>

CONTACT

Izumi Dateyama PhD. Leave a Nest Co., Ltd

✉ HD@LNEST.JP



**Add Venture
Forum**

